

Community & Business Benefits

Community Benefit Fund

Should Lyrencarriga Wind Farm be consented, it has the potential to provide significant additional investment into community projects that will benefit local residents and businesses.

Following the publication of the DCCAE's Renewable Energy Support Scheme (RESS) and the terms of conditions of the first auction under the scheme, RESS1 taking place this year (2020), it is anticipated that based on the requirement for all projects to contribute €2 per MWh of output, a community fund in the region of €6,000 per MW of installed capacity per annum could be available.

This means that a wind farm at Lyrenacarriga of 60 MW to 85 MW capacity could result in a fund upward of €360,000 per year for the local community, subject to the final installed capacity (MW) and output (MWh) of the wind farm. This represents a dependable source of income for the communities local to Lyrenacarriga.

RWE Renewables Ireland supports the development of a funding process that puts decision making on what funds are spent where in the hands of local people. The flexibility of the investment that could come from Lyrenacarriga Wind Farm would mean that a panel of local community representatives could decide how to invest the income in a variety of projects that will benefit residents, local businesses and the community as a whole including creating job opportunities and skills development, tourism initiatives and area regeneration projects.

RWE have demonstrable experience in the delivery of large community benefit funds in other jurisdictions and are committed to ensuring that our projects meet or indeed exceed emerging best practice from the DCCAE and the DHPLG on Community Benefit.

Potential community shared ownership

A further potential income stream could come via RWE Renewables Ireland offering the local community the opportunity to participate in a community shared ownership scheme whereby they could invest in the wind farm in return for a share of future revenue.

Supply chain opportunities & jobs

During the construction phase of the wind farm, there will be supply chain opportunities for local businesses leading to an increase in local investment and job opportunities. Prior to construction starting, RWE Renewables Ireland will award the principle contract for Civil Balance of Plant supply and installation of the turbines, and the Electrical Balance of Plant contract.

Once these main contracts have been placed, there will be potential opportunities for supply chain companies in the region to tender for subcontracts. The types of businesses that could benefit from this expenditure is wide ranging, and is likely to include: traffic management; materials supply; plant hire; fencing, fuel, security, waste management, signing and lighting, telecommunications, drainage, catering and hotel and B&B businesses.

Payment of business rates to local council

A significant wider benefit of the proposed Lyrenacarriga Wind Farm is the annual business rates contribution estimated to be in excess of €800,000.00 for the full life of the wind farm. These business rates will be paid locally and contributions will significantly benefit the wider local economy.

Next steps

Using the contact details on the front page of this newsletter, if you have any questions or comments you would like to make please email, write or telephone to speak to us about the project. We intend to submit the planning application for Lyrenacarriga Wind Farm to An Bord Pleanála at the end of Autumn 2020.

At that time, everyone will have an opportunity to submit a letter of support, objection, or an observation on the application to An Bord Pleanála. We will publicise when this submission period opens on our website, in newspapers and by any other means agreed with An Bord Pleanála.

RWE

Lyrenacarriga Wind Farm

Newsletter

August 2020

This newsletter is intended to update the local community on the development of Lyrenacarriga Wind Farm, and includes information on the proposed turbine layout, online virtual consultation event and project development timescales as well as contact details for any questions or feedback that you may have.

All of this information, and more, in the form of a virtual online exhibition can be viewed on the project website www.lyrewindfarm.com

Photomontages that indicate the potential views of turbines from a number of identified key view-points around the site will also available online at www.lyrewindfarm.com

Company Update

On 30 June 2020, innogy Renewables Ireland became RWE Renewables Ireland. RWE now stands as the world's second largest offshore wind developer and third largest provider of renewable electricity across Europe. This concludes a process which has been ongoing for some time.

RWE Renewables Ireland is operating and developing a number of renewable projects in Ireland, across a range of renewable energy technologies. We have a

range of projects, including onshore wind, offshore wind and battery storage. Our projects, when completed, will power homes, factories, transport and services, providing clean energy for Ireland's economy and society. Collectively, they will make a major impact in reducing Ireland's emissions.

RWE plans to invest €5 billion by 2022 on renewables projects – with Ireland planned to play an important role in that investment.

Key Project Facts

The proposed wind farm site is located approximately 5 kilometres southeast of Tallow, Co. Waterford and approximately 15 kilometres northwest of Youghal Co. Cork. The total site area measures approximately 799 hectares. The site elevation ranges between approximately 140 metres and 210 metres above ordnance datum.

The site, which straddles the county boundary between Co. Waterford and Co. Cork, comprises lands including Lyrenacarriga, Lyre Mountain, Ballycondon Commons, Kilcalf Mountain, Ballycolman, Rearour North, Corrandromaun, Kilnafurrery, Kilcronat Mountain, Propoge, Shanpollagh and Knockakeo. The majority of the proposed wind farm site is currently commercial forestry, with other areas used for agriculture. These land uses will be able to continue in conjunction with a wind farm development at the site.

Based on the results from the environmental and technical surveys that have been undertaken, it is considered that:

- The site can accommodate up to 17 wind turbines
- Each wind turbine will up to 150 metres tall (from the turbine base to the top of the turbine blade, when blades are in an upright position)
- The installed capacity of each wind turbine will be between 3.5 and 5 megawatts (MW)
- A minimum setback distance of 700 metres can be achieved from all properties

Your views matter to us

Your views matter. That's why we are providing everyone in the community with an opportunity to find out more about our final proposals and to enable you to ask any questions. You can submit your feedback to us via email, written letter or telephone, whichever is easiest for you.



Telephone
056 771 5782



Email
lyre@rwe.com



Post
Lyre Wind Farm, RWE,
Unit 5 Desart House,
Lower New Street, Kilkenny City

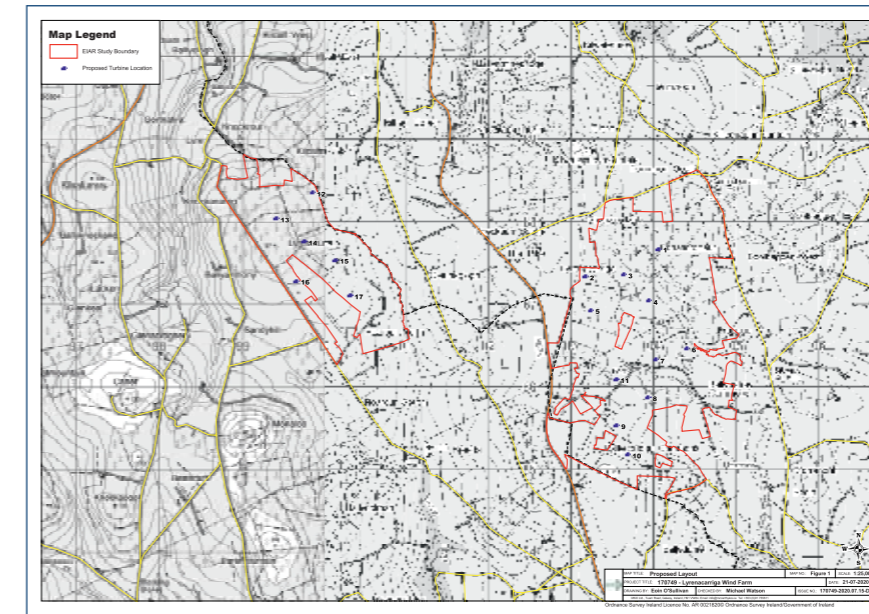
www.lyrewindfarm.com

Development of turbine layout plan

At our public information event in May 2018, we presented the potential for up to 25 turbines within the viable area of the proposed site. It has been a lengthy process to get to the final turbine layout (comprising 17 turbines), during which we have undertaken extensive environmental and technical surveys as well as consultation with local residents within 2km of the site, to ensure that we have designed the most effective wind farm that will help to deliver Ireland's 2030 energy targets.

The wind farm design has been governed by national guidance on many criteria including; noise, set back distance and shadow flicker, hydrology & hydrogeology as well as comprehensive environmental impact assessments.

Surveys have been carried out in the following areas, amongst others. Full details will be submitted on a dedicated project website, once the application has been submitted.



- Shadow Flicker
- Biodiversity: Flora & Fauna
- Biodiversity: Birds
- Land, Soils and Geology
- Hydrology and Hydrogeology
- Air and Climate
- Noise and Vibration
- Landscape and Visual
- Archaeological, Architectural and Cultural Heritage

The results of these surveys, along with feedback from statutory consultees and members of the public, including your opinion, have contributed to finalising the design of the wind farm.

Project Timeline

Please note that a planning application has not yet been submitted for Lyrenacarriga Wind Farm. It is our intention to submit a Strategic Infrastructure Development application to An Bord Pleanála in Autumn 2020.

Once submitted, all planning application documents and drawings will be available for viewing in the offices of Waterford County Council, Cork County Council and An Bord Pleanála, and on a dedicated project website.

Following lodgement of the application, members of the community can make submissions to An Bord Pleanála during the public consultation period (duration to be specified by An Bord Pleanála; minimum 7 weeks) and RWE Renewables will need to respond to these submissions.

